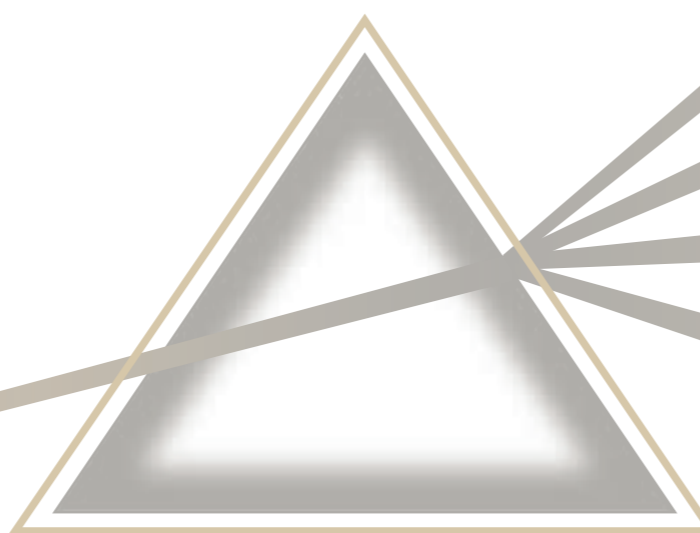


*EVOLution*

**ENERGIE  
KER**



Via Giardini Nord, 231/233 - 41026 Pavullo (Mo) Italy  
Telefono ++ 39-0536.30.17.11 - Fax ++39.0536-22.037  
E-mail: ceramicagoldart@goldartcer.com  
<http://www.energieker.com>



*EVOLution*

**ENERGIE  
KER**



PELLEPELLEPELLEPELLEPELLEPE



METALLOMETALLOMETALLOMETA



LEGNOLEGNOLEGNOLEGNOLEGN




TESSUTOTESSUTOTESSUTOTESSU

LISTINO PREZZI PRICE LIST - PREISLISTE - LISTE DE PRIX


Codice prezzo Price band Preisklasse Code de prix	EURO/MQ. EUR/SMQ. EUR/QM. EURO/MQ.	Codice prezzo Price band Preisklasse Code de prix	EURO/PZ. EUR/PC. EUR/STK. EURO/PC.
10	20,42	532	12,80
15	21,95	533	9,75
20	23,47	534	15,24
21	34,14	535	18,59
25	25,00	537	17,07
26	35,67	551	12,80
40	29,57	552	14,63
41	40,24	554	23,17
45	32,01	555	24,39
46	42,68	556	44,20
80	34,75	557	19,20
81	45,42	558	20,42
85	36,27	600	4,57
86	46,94	601	2,74
430	27,46	610	15,85
431	38,10	611	16,77
440	38,10	650	13,72
441	48,77	651	15,24
445	41,15	698	18,29
450	50,30	801	5,49
451	60,97	895	10,06
460	42,68	898	14,63
463	44,20	905	1,98
466	47,25	910	7,62
471	31,09	911	11,52
474	32,62	912	14,94
477	34,14	913	11,58
480	35,67	915	19,82
483	40,24	917	28,96
486	42,68		
489	45,42		
492	46,94		

N.B.: Per l'acquisto di palette non complete il prezzo netto sarà maggiorato di 1 euro  
For uncomplete pallets 1 eur per sqm more on net price  
Für Kommissionen soller wir 1 eur mehr berechnen  
Prix valables pour mise en stock palettes completes (contremarque) + 1 euro



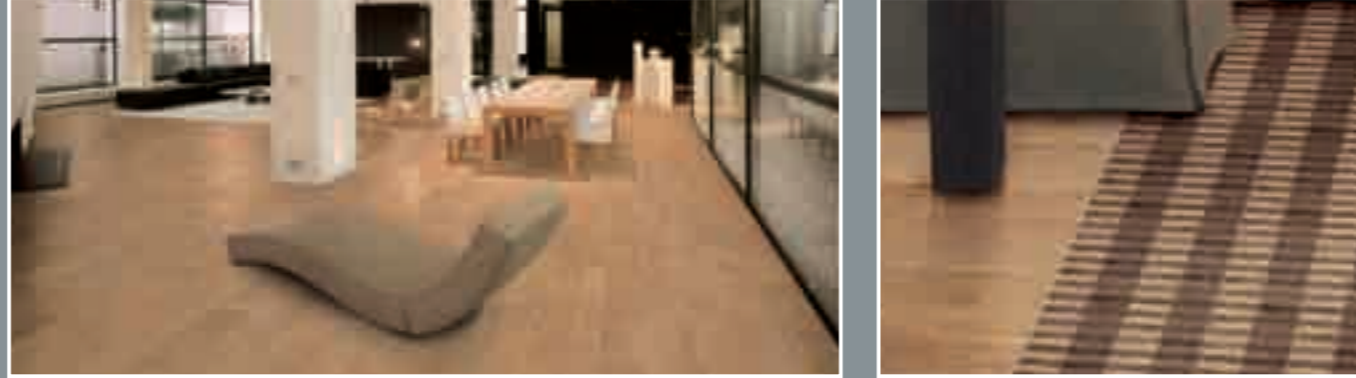
EVolution

...nappa superfici



EVolution

...riflessi di luce



EVolution

...essenze naturali



EVolution

...calore e moder

CARATTERISTICHE TECNICHE TECHNICAL CHARACTERISTICS - TECHNISCHE KENNZEICHEN - CARACTERISTIQUES TECHNIQUES

	CARATTERISTICA TECHNICAL CHARACTERISTICS CARACTERISTIQUES TECHNIQUES TECHNISCHE EIGENSCHAFTEN	NORMA DI RIFERIMENTO REFERENCE STANDARD NORME DE REFERENCE BEZUGSNORM	VALORE RICHIESTO REQUIRED VALUE VALEUR REQUISE GEFORDERTER WERT	VALORE MEDIO ENERGIEKER AV. ENERGIEKER VALUE VALEUR MOYENNE ENERGIEKER DURCHSCHN. ENERGIEKER WERT			
	DIMENSIONI DIMENSIONS DIMENSIONS MASSE	ISO 10545-2	Conforme Compliant Conforme Entspricht	Conforme Compliant Conforme Entspricht			
	ASSORBIMENTO D'ACQUA WATER ABSORPTION ABSORPTION D'EAU WASSERAUFNAHME	ISO 10545-3	≤0,5 %	<0,1%			
	RESISTENZA A FLESSIONE MODULUS OF RUPTURE RESISTANCE A LA FLEXION MECHANISCHER WIDERSTAND	ISO 10545-4	MODULUS OF RUPTURE R ≥ 35 N/mm <sup>2</sup> BREAKING STRENGTH S ≥ 1300 N	R>50 N/mm <sup>2</sup> S>2500 N			
	DUREZZA SUPERFICIALE SCRATCH RESISTANCE DURETE SUPERFICIELLE OBERFLÄCHENHÄRTE	ISO 10545-7	0 - V	IV - V			
	DILATAZIONE TERMICA LINEARE LINEAR THERMAL EXPANSION DILATATION THERMIQUE LINEAIRE LINEARE WÄRMEDEHNUNG	ISO 10545-8	=< 9x10 <sup>-5</sup> °C <sup>-1</sup>	6x10 <sup>-5</sup> °C <sup>-1</sup>			
	RESISTENZA AGLI SBALZI TERMICI THERMAL SHOCK RESISTANCE RESISTANCE AUX ECARTS DE TEMPERATURE WIDERSTAND BEI TEMPERATURSCHWANKUNGEN	ISO 10545-9	Resistente Resistant Resistant Entspricht	Resistente Resistant Resistant Entspricht			
	RESISTENZA AL GELO FROST RESISTANCE RESISTANCE AU GEL FROSTBESTÄNDIGKEIT	ISO 10545-12	Resistente Resistant Resistant Entspricht	Resistente Resistant Resistant Entspricht			
	RESISTENZA AGLI ACIDI ED ALLE BASI ACID AND ALKALI RESISTANCE RESISTANCE AUX ACIDES ET AUX BASES FÄHIG GEGEN SÄUREN UND LAUGEN	ISO 10545-13	CLASS GB MIN.	Low concentration GLA High concentration GHA			
	RESISTENZA ALL'ATTACCO CHIMICO CHEMICAL RESISTANCE RESISTANCE A L'ATTAQUE CHEMIQUE FÄHIG GEGEN SÄUREN UND LAUGEN	ISO 10545-13	CLASS GB MIN.	GA			
	RESISTENZA ALLE MACCHIE STAIN RESISTANCE RESISTANCE AU TACHES FARBBESTÄNDIGKEIT	ISO 10545-14	CLASS 3 MIN.	5			
	COEFFICIENTE DI ATRITO (SCIVOLOSITÀ) FRICTION COEFFICIENT (SLIPPERINESS) COEFFICIENT DE FRICTION (GLISSEMENT) REIBUNGSKOEFFIZIENT (SCHLÄPFRIKKEIT)	BCR - Italia DM del 14-06-89	ASTM - USA ASTM C1028	DIN - Germania DIN 51130			
		Dry rubber 0,62	Wet rubber 0,51	Dry leather 0,62	Dry neolythe 0,69	Wet neolythe 0,62	R9 ZH 1/571

THE PRODUCTS HAVING AN ABSORPTION < 0,5% ARE CLASSIFIED ACCORDING TO THE UNI CEN STANDARDS "FULLY VITRIFIED TILES" AND ACCORDING TO THE ASTM STANDARDS "IMPERVIOUS TILES"

**AVVERTENZA PER I SIGNORI POSATORI**  
Controllare attentamente il materiale prima della posa particolarmente tono, calibro e scelta. Non si accettano reclami sul materiale posato.

**NOTICE TO TILE FIXERS**  
The material should be carefully checked before fixing, especially tonality, caliber and choice. Claims cannot be accepted once the material is installed.

**AVIS AUX CARRELEURS**  
Contrôler attentivement les carreaux avant la pose particulièrement tonalité, calibre, choix. Aucune réclamation ne sera acceptée une fois que le matériel est posé.

**HINWEIS FUER DIE VERLEGUNG**  
Das Material ist vor der Verlegung genau zu ueberpruefen besonders Tonalität, Kaliber und Sorte. Reklamationen nach der Verlegung werden nicht akzeptiert.

**INFORMACJA DLA FIRM UKLADAJA, CYCH PLYTKI**  
Prosimy o sprawdzenie materialu przed ulozeniem, szczególnie tonacja, kaliber, gatunek. Po ulozeniu plytek reklamacje nie beda, uwzgladniane.



ekrù ekrù ekrù ekrù ekrù ekrù



Ekrù 61,5x61,5  
Ekrù 61,5x61,5 rettificato

488  
489



Ekrù 30,8x30,8  
Ekrù 30,8x30,8 rettificato

470  
471



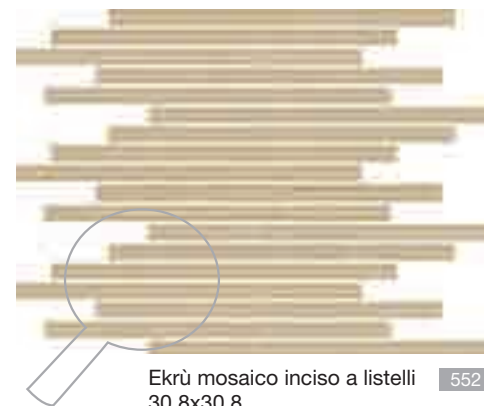
Ekrù mosaico esagonale  
30,8x30,8

556



Ekrù 30,8x61,5  
Ekrù 30,8x61,5 rettificato

482  
483



Ekrù mosaico inciso a listelli  
30,8x30,8

552



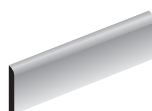
Ekrù 45,5x45,5  
Ekrù 45,5x45,5 rettificato

476  
477



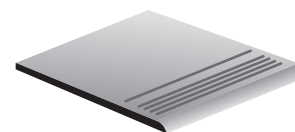
Ekrù mosaico 30,8x30,8

551



Battiscopa 7x30,8  
Battiscopa 8x45,5  
Battiscopa 10x61,5

601  
600  
600



Gradino 30,8x30,8

801

grafite

Grafite 61,5x61,5  
Grafite 61,5x61,5 rettificato

491  
492

Grafite 45,5x45,5  
Grafite 45,5x45,5  
rettificato

479  
480

Grafite 30,8x30,8  
Grafite 30,8x30,8 rettificato

473  
474

chocolate

Chocolate 61,5x61,5  
Chocolate 61,5x61,5 rettificato

491  
492

Chocolate 45,5x45,5  
Chocolate 45,5x45,5  
rettificato

479  
480

Chocolate 30,8x30,8  
Chocolate 30,8x30,8 rettificato

473  
474

ash

Ash 61,5x61,5  
Ash 61,5x61,5 rettificato

488  
489

Ash 45,5x45,5  
Ash 45,5x45,5  
rettificato

476  
477

Ash 30,8x30,8  
Ash 30,8x30,8 rettificato

470  
471

rafia

Rafia 61,5x61,5  
Rafia 61,5x61,5 rettificato

491  
492

Rafia 45,5x45,5  
Rafia 45,5x45,5  
rettificato

479  
480

Rafia 30,8x30,8  
Rafia 30,8x30,8 rettificato

473  
474



Grafite 30,8x61,5  
Grafite 30,8x61,5 rettificato

485  
486



Grafite mosaico  
30,8x30,8

551



Grafite mosaico  
30,8x30,8 esagonale

556



Grafite mosaico  
inciso a listelli 30,8x30,8

552



Bacchetta metallo  
1,5x1,5  
1,5x30,8  
1,5x45,5  
1,5x61,5

905  
910  
911  
912



Chocolate 30,8x61,5  
Chocolate 30,8x61,5 rettificato

485  
486



Chocolate mosaico  
30,8x30,8

551



Chocolate mosaico  
30,8x30,8 esagonale

556



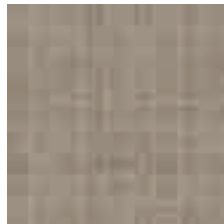
Chocolate mosaico  
inciso a listelli 30,8x30,8

552



Ash 30,8x61,5  
Ash 30,8x61,5 rettificato

482  
483



Ash mosaico  
30,8x30,8

551



Ash mosaico  
30,8x30,8 esagonale

556



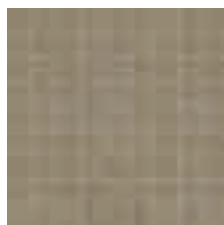
Ash mosaico  
inciso a listelli 30,8x30,8

552



Rafia 30,8x61,5  
Rafia 30,8x61,5 rettificato

485  
486



Rafia mosaico  
30,8x30,8

551



Rafia mosaico  
30,8x30,8 esagonale

556



Rafia mosaico  
inciso a listelli 30,8x30,8

552

# TABELLA PESI E MISURE

WEIGHTS AND MEASURES TABLE - GEWICHTS UND MASSTABELLE - TABLEAU POIDS ET MESURES

FORMATO SIZE FORMAT FORMAT	PEZZI X SCATOLA PIECES X BOX STCK X KARTON PIECES X BOITES	MQ. X SCATOLA SQMT. X BOX QM. X KARTON M <sup>2</sup> X BOITES	KG. X SCATOLA KG. X BOX KG. X KARTON KG. X BOITES	KG. X MQ. KG. X SQMT. KG. X QM. KG. X M <sup>2</sup>	SCATOLE/PALLET BOXES X PALETT KARTON X PALETTE BOITES X PALETTE	MQ. X PALLET SQMT X PALLET QM. X PALETTE M <sup>2</sup> X PALETTE	KG. X PALLET KG. X PALLET KG. X PALETTE KG. X PALETTE
30,8x30,8 12,3"x12,3"	16	1,52	27,00	17,76	40	60,80	1.100
45,5x45,5 18"x18"	7	1,45	28,18	19,43	44	63,80	1.260
7,5x61,5 3"x24"	24	1,11	21,90	19,73	40	44,40	896
10x61,5 4"x24"	16	0,98	21,03	21,46	40	39,20	860
15x61,5 6"x24"	12	1,11	23,47	21,14	40	44,40	960
30,8x61,5 12"x24"	7	1,32	26,50	20,07	40	52,80	1.080
61,5x61,5 24"x24"	4	1,51	34,32	22,73	30	45,30	1.050